



Child's Dream

Improving health and education for
sustainable development

Consolidated Financial Report 2017

Table of Contents

Introduction	3
Consolidated Financials 2017	5
Balance Sheet (in CHF)	5
Notes	5
Statement of Operations (in CHF)	6
Notes	6
Financial Statistics	7
Information for Donors	10
Contact Information	11

Introduction

The Year 2017: in many ways an extraordinary, but also challenging year for all of us at Child's Dream.

One would assume that, after having been in operation for more than 14 years, a certain consolidation is setting in and things become a bit more routine, hence boring. We also often hear the questions, 'What's next, Marc and Daniel? After 14 years of building up and running Child's Dream, monotony and boredom must be weighing you down". Trust us, NOT AT ALL!!!

2017 was yet another outstandingly interesting and fulfilling year, but it was also one of the most demanding years when it comes to the workload on all of us. Thanks to our amazing team members, the heavy workload was mastered with ease and never before were so many projects implemented, programmes run and improved, and beneficiaries reached. All three of our focus groups progressed in their work, so we want to share a few highlights of our working year, addressing beneficiaries in Myanmar, Cambodia, Laos and Thailand.

In September, our "Health" group had reason to celebrate. The Children's Medical Fund Programme accepted its 1,500th child for treatment. Close to five million US Dollars were spent, since inception in 2006, on this life-saving programme. Without the incredible dedication of our health team, many of these little children would have perished.

Our "Basic Education" team has made big leaps forward in 2017. What started with building schools and boarding houses back in 2004, resulted in tens of thousands of children having access to education for the first time. But then, it's not just about providing access; it's increasingly about the quality of education and the relevance of what is taught. Our increased focus on quality and relevance will further strengthen the educational systems of our target countries.

Creating responsible leaders and specialists is the main focus of our "Higher Education" group. Change makers will be able to sustainably and positively shape the future of their respective countries. We are happy to see that our past success in Myanmar is more and more filtering through in the other three countries. In 2017, the first ever Alumni Conference was held in Laos, a sign of a maturing scholarship programme.

On a more macro level, we finalised our strategy for the coming five years and revised our vision and mission statement to be more precise and to the point.

Vision: Empowered people responsibly shaping their communities

Mission: Improving health and education for sustainable development

And as a Child's Dreamer, we certainly always hope that some of our own dreams become true. Having worked in Myanmar and with Burmese beneficiaries for over 14 years, one such wish became reality in 2017. Child's Dream Myanmar Association, registered in Yangon, was born in the summer. Not in our wildest dreams, some years ago operating under the radar of an oppressive regime, did we think that our own charity registration in Myanmar would ever become a reality.

On the sad side, we are certainly disturbed and distressed by the recent events in Rakhine State, Myanmar. We truly hope for the future of the country that this humanitarian crisis can be solved quickly without inflicting any further damage on people.

Though we have said this again and again, our tremendous impact on tens of thousands of children and youth would not have been possible without the very generous support of all our donors and

friends. Having such a loyal, engaged and caring donor base means the world to us. Many, many thanks!

And finally a big thank you to the most amazing team on earth. We are proud of each and every team member in the Child's Dream family and thank you all for your tremendous dedication to helping children and youth in need. You are our heroes!

Alone we can do so little; together we can do so much!!!



Daniel Marco Siegfried
Founder & Head Projects



Marc Thomas Jenni
Founder & Head Operations

Consolidated Financials 2017

Below, please find the consolidated financial figures of Child's Dream Foundation Thailand and Child's Dream Association Switzerland.

Comprehensive audited annual reports of both legal entities can be found on our webpage www.childsdream.org.

Balance Sheet (in CHF)

	31.12.2017	31.12.2016
Assets		
Current assets		
Liquid assets	6,622,218	6,273,466
Financial assets	26,031	1,485
Non-current assets		
Fixed assets	642,030	622,358
Total Assets	7,290,279	6,897,309
Liabilities, Funds and Capital		
Current liabilities		
Liabilities	315,433	227,815
Funds and Capital		
Paid-in capital	8,825	8,488
Restricted funds	1,863,716	1,450,782
Capital of the Organisation	5,248,170	5,110,018
Surplus&Loss for the year	- 145,865	100,206
Total Liabilities, Funds and Capital	7,290,279	6,897,309

Notes

- 1) For consolidation purposes, a foreign exchange rate of 33.9935503 between CHF and THB was applied in 2017. For 2016 a FX rate of 35.3427586 was the basis for calculation.
- 2) The yearly FX rate is the weighted average resulting from 'Donation Transfers' between Child's Dream Association Switzerland and the receiving entity Child's Dream Foundation Thailand.

Statement of Operations (in CHF)

		1.1.2017 – 31.12.2017	1.1.2016 – 31.12.2016
Income			
Donation private individuals	581,736		560,602
<i>Restricted</i>	<u>1,656,080</u>	2,237,816	<u>1,679,476</u> 2,240,078
Donations corporate	1,333,622		1,116,900
<i>Restricted</i>	<u>4,246,631</u>	5,580,253	<u>3,660,745</u> 4,777,645
Donations shop		1,178	987
Total Income		7,819,247	7,018,710
Expenditure			
Project expenditure		7,109,307	6,385,065
Administration & fundraising expenditure			
<i>Personnel costs</i>	336,915		292,928
<i>Administration, legal & travel</i>	54,995		59,046
<i>Depreciation</i>	10,061		9,677
<i>Provisions</i>	47,068		50,930
<i>Other costs</i>	195	449,234	-2,136 410,445
Total Expenditure		7,558,541	6,795,510
Operating profit (loss)		260,706	223,200
Income (loss) from financial result		2,720	21
Result prior to allocation from restricted funds		263,426	223,221
Allocation to/from restricted funds		-409,291	-123,015
Profit (Loss)		-145,865	100,206

Notes

- 1) Our consolidated administration expense ratio for 2017 is 5.7%.
- 2) Third party fundraising providers and our Hong Kong legal entity hold CHF 1,830,000 on behalf of Child's Dream. This amount is not yet included in our consolidation. Funds will be transferred to our account as and when required and shown in the respective consolidation accordingly.
- 3) In 2017, 22 volunteers provided unpaid work for our organisations. The volunteers stayed with us for different periods of time and contributed approximately 5.9 man-years.
- 4) As of end of 2017, we counted 44 paid employees (beside the volunteers above). Seventeen were from Thailand, thirteen from Myanmar, six from Cambodia, three from Switzerland, two from Laos and one from each of Germany, the Philippines and the USA.

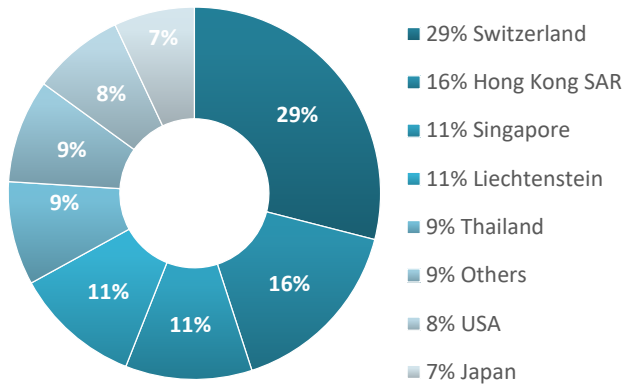
Financial Statistics

Source and uses of funds

2017

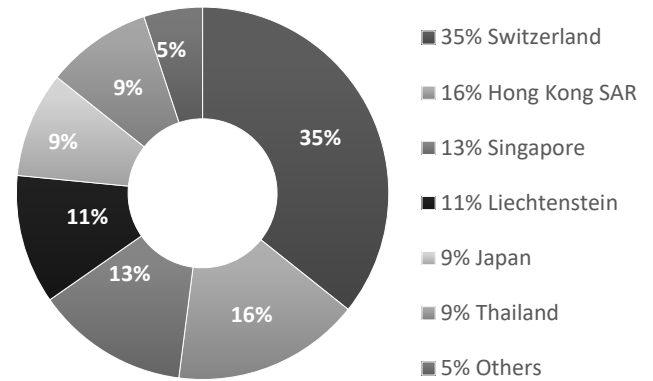
Origin of donations

Total CHF 7,819,247



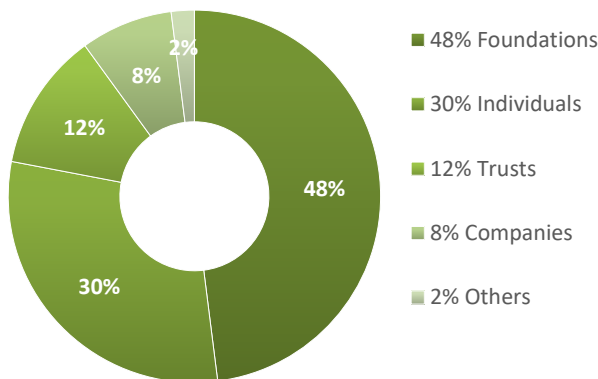
2016

Total CHF 7,018,710

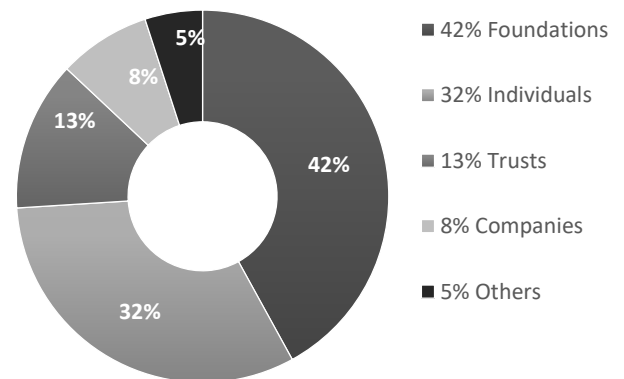


Type of donors

Total CHF 7,819,247

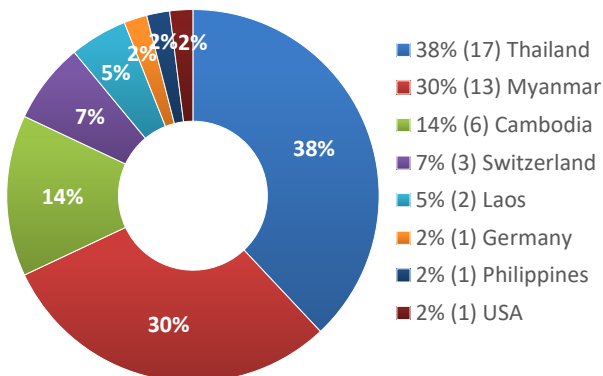


Total CHF 7,018,710

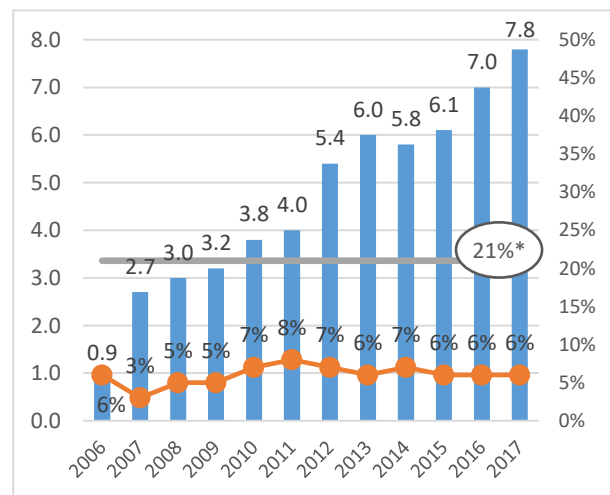


Employees by nationality

End of 2017, we counted 44 paid employees (average age 35 years)



Donation volume (m USD) vs. admin. costs (%)



* Average admin cost of ZEW0-approved (Swiss) NGOs (SOURCE Annual Report ZEW0 2014)

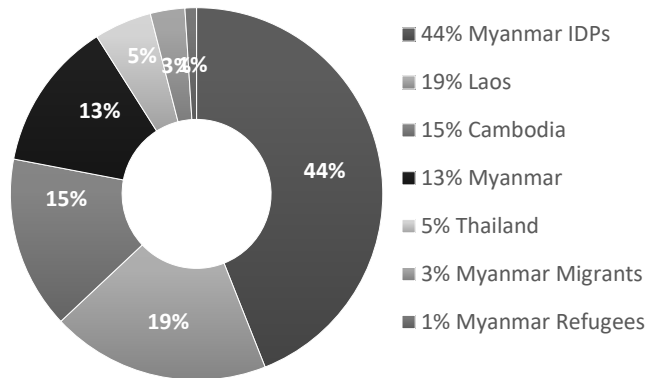
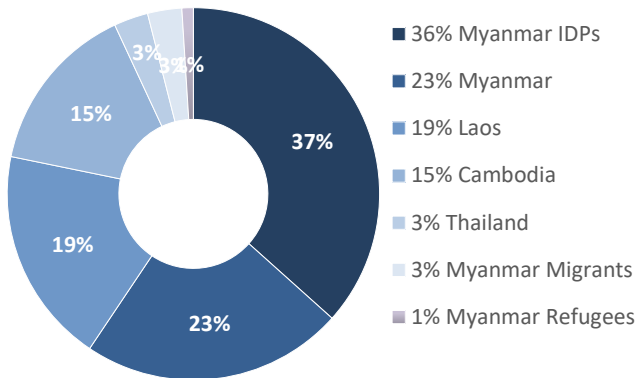
2017

2016

Beneficiary count by origin / nationality of beneficiaries

Total of 297,388 beneficiaries in 2017

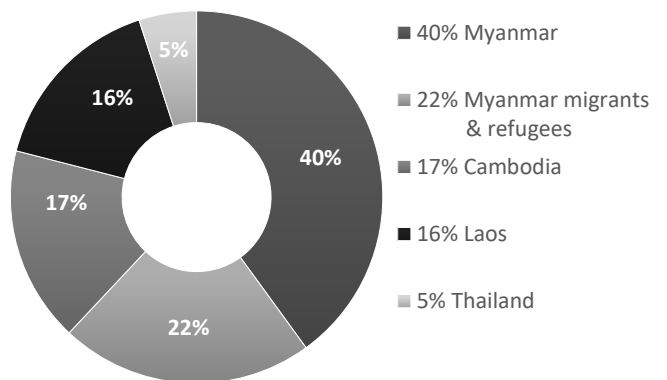
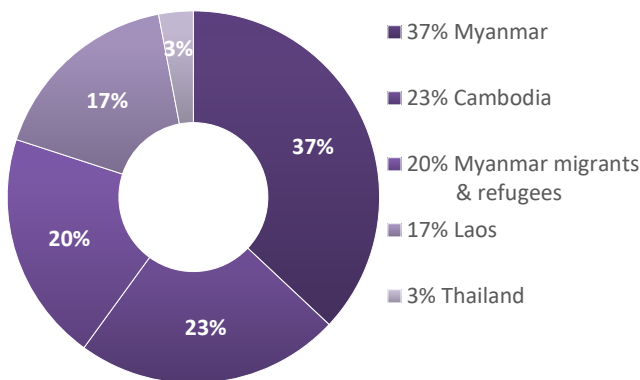
Total of 243,368 beneficiaries in 2016



Project expenditures by origin / nationality of beneficiaries

Total CHF 7,109,307

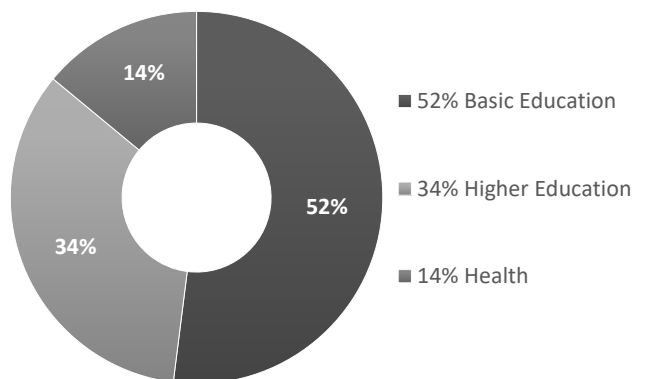
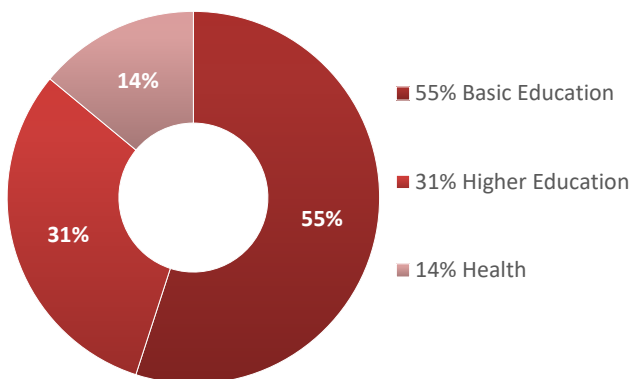
Total CHF 6,385,065



Project expenses by focus groups

Total CHF 7,109,307

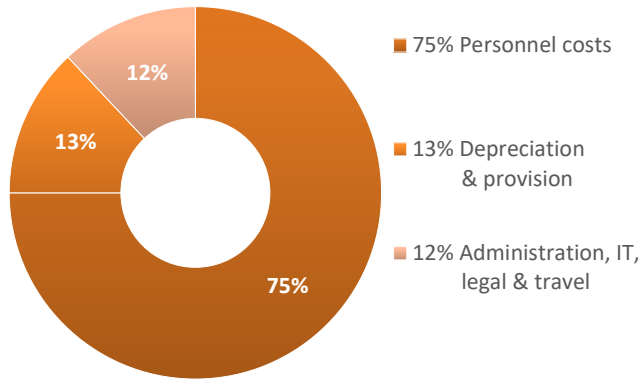
Total CHF 6,385,065



2017

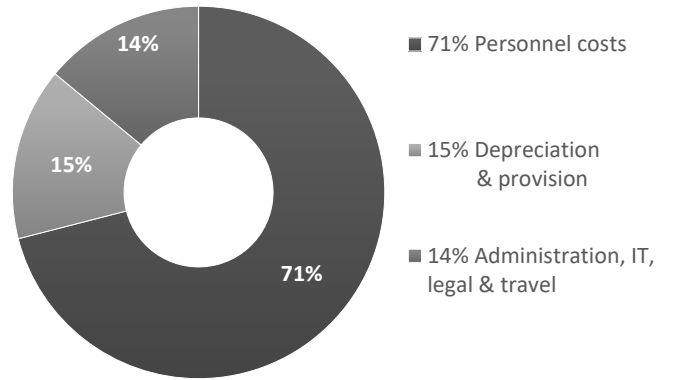
Administration costs

Total CHF 449,234



2016

Total CHF 410,445



Information for Donors

The following link gives you an overview of the different ways to financially support us.

<http://childsdream.org/donate/>

Donations are possible via bank transfer, credit cards, PayPal, cheques and bitcoins.

If you are interested in making a bequest to us in your will, please get in touch with one of the two founders.

Donors from Switzerland

Swiss-taxed donors can deduct donations from their taxable income. Please get in touch with us if you require a tax receipt.

Donors outside of Switzerland

We have set up legal entities or have entered into co-operation agreements with feeder organisations in the following countries:

- Australia
- France
- Germany
- Hong Kong
- Italy
- Luxemburg
- The Netherlands
- United Kingdom
- United States of America

Donors domiciled in the above-mentioned countries can claim tax relief on their donations to Child's Dream if they follow the donation path indicated under the respective country. More information can be found at <http://childsdream.org/donate/>

Contact Information

Thailand

Main Office

Child's Dream Foundation
238/3 Wualai Road
Soi Boon Muang
T. Haiya, A. Muang
Chiang Mai 50100
Thailand

phone +66 (0)53 201 811

GPS [18° 46.320'N, 98° 58.752'E](#)

[Map to our office >](#)

Cambodia

Field Office

Child's Dream Cambodia
N. 160, Group 10
Krous Village
Svay Dangcum Commune
Siem Reap
Cambodia

phone +855 63 64 85 888

GPS [13°22'22.3"N 103°50'09.0"E](#)

[Map to our office >](#)

Myanmar

Field Office

Child's Dream Myanmar
No. 35/C, Room (2C5)
Second Floor, Yankin Center
Saya San Road & Sat Hmu (1) Road
Yankin Township
Yangon, Myanmar

phone +95 (0)940 477 7133

GPS [16°49'24.1"N 96°09'44.8"E](#)

[Map to our office >](#)

Since our colleagues in Cambodia and Myanmar are mostly on the road, we kindly ask you to give us advance notice if you intend to visit one of our field offices. Please write to info@childsdream.org and we are happy to arrange for a meeting.

E-mail info@childsdream.org

Webpage www.childsdream.org

Facebook www.facebook.com/childsdreamfoundation

LinkedIn www.linkedin.com/company/child's-dream-foundation?trk=tabs_biz_home

Twitter twitter.com/Child_s_Dream

YouTube www.youtube.com/user/childsdreamtube



Child's Dream Association

Audited Financial Report 2017

Table of Contents

Introduction	3
Reference to our Consolidated Financials 2017	5
Our Mandate	5
Our Board	6
Management Team of the Organisation	6
Financial Statements 2017	7
Balance Sheet (in CHF)	7
Statement of Operations (in CHF)	8
Attachment	9
Statement of Changes in Capital (in CHF)	9
Explanatory notes on the Statement of Operations	10
Additional information	10
Cash Flow Statement	11
Statement of Changes in Capital (in CHF)	11
Performance Report 2017	11
Breakdown of Project Expenses 2017 (in CHF)	12
Impact Report 2017	17
Responsibility for Project Work (by legal entity)	20
Information for Donors	20
Contact Information	21
Legal Domicile	21
Report of the Auditor	22

Introduction

The Year 2017: in many ways an extraordinary, but also challenging year for all of us at Child's Dream.

One would assume that, after having been in operation for more than 14 years, a certain consolidation is setting in and things become a bit more routine, hence boring. We also often hear the questions, 'What's next, Marc and Daniel? After 14 years of building up and running Child's Dream, monotony and boredom must be weighing you down". Trust us, NOT AT ALL!!!

2017 was yet another outstandingly interesting and fulfilling year, but it was also one of the most demanding years when it comes to the workload on all of us. Thanks to our amazing team members, the heavy workload was mastered with ease and never before were so many projects implemented, programmes run and improved, and beneficiaries reached. All three of our focus groups progressed in their work, so we want to share a few highlights of our working year, addressing beneficiaries in Myanmar, Cambodia, Laos and Thailand.

In September, our "Health" group had reason to celebrate. The Children's Medical Fund Programme accepted its 1,500th child for treatment. Close to five million US Dollars were spent, since inception in 2006, on this life-saving programme. Without the incredible dedication of our health team, many of these little children would have perished.

Our "Basic Education" team has made big leaps forward in 2017. What started with building schools and boarding houses back in 2004, resulted in tens of thousands of children having access to education for the first time. But then, it's not just about providing access; it's increasingly about the quality of education and the relevance of what is taught. Our increased focus on quality and relevance will further strengthen the educational systems of our target countries.

Creating responsible leaders and specialists is the main focus of our "Higher Education" group. Change makers will be able to sustainably and positively shape the future of their respective countries. We are happy to see that our past success in Myanmar is more and more filtering through in the other three countries. In 2017, the first ever Alumni Conference was held in Laos, a sign of a maturing scholarship programme.

On a more macro level, we finalised our strategy for the coming five years and revised our vision and mission statement to be more precise and to the point.

Vision: Empowered people responsibly shaping their communities

Mission: Improving health and education for sustainable development

And as a Child's Dreamer, we certainly always hope that some of our own dreams become true. Having worked in Myanmar and with Burmese beneficiaries for over 14 years, one such wish became reality in 2017. Child's Dream Myanmar Association, registered in Yangon, was born in the summer. Not in our wildest dreams, some years ago operating under the radar of an oppressive regime, did we think that our own charity registration in Myanmar would ever become a reality.

On the sad side, we are certainly disturbed and distressed by the recent events in Rakhine State, Myanmar. We truly hope for the future of the country that this humanitarian crisis can be solved quickly without inflicting any further damage on people.

Though we have said this again and again, our tremendous impact on tens of thousands of children and youth would not have been possible without the very generous support of all our donors and friends. Having such a loyal, engaged and caring donor base means the world to us. Many, many thanks!

And finally a big thank you to the most amazing team on earth. We are proud of each and every team member in the Child's Dream family and thank you all for your tremendous dedication to helping children and youth in need. You are our heroes!

Alone we can do so little; together we can do so much!!!



Daniel Marco Siegfried
Founder & President



Marc Thomas Jenni
Founder & Vice-President

Reference to our Consolidated Financials 2017

Child's Dream, as a charitable organisation, consists of Child's Dream Association Switzerland and Child's Dream Foundation Thailand. In order to give you an overview of our work, the consolidated financials are available on our website.

This audited Financial Report 2017 only reports on the work of Child's Dream Association Switzerland. The financial statements are audited according to the latest Swiss standards. The audit report can be found on page 22.

Our Mandate

Child's Dream Association is a charitable association with the purpose of supporting underprivileged communities in the Mekong Sub-Region, which comprises Myanmar, Laos, Cambodia and Thailand. The association is at liberty to extend its geographical reach, especially in Asia. The association concentrates, first and foremost, on the support of children and youth. Adults can also be considered, especially – but not exclusively – when support would lead to an improvement in their health or educational situation and would increase the socio-economic opportunities of entire communities. The main purpose of the association's activities is the improvement of health and education. Furthermore, the association is entitled to contribute to emergency aid in the event of a disaster. The association reaches its goal in close cooperation with the communities affected.

The association can work with or cooperate with either national or international organisations which follow the same or similar objectives. The objectives have no commercial purpose, nor do they serve any personal interests of the members. The activities of the association serve the interests of the general public only and are not-for-profit.

Our Board

President - Founder & Head Projects

Daniel Marco SIEGFRIED (3 years – until board meeting Spring 2018)

Vice-President - Founder & Head Operations

Marc Thomas JENNI (3 years – until board meeting Spring 2018)

Secretary

Andrea Claudia KLEINERT (3 years – until board meeting Spring 2018)

Board Member

Jeanne BARRAS ZWAHLEN (3 years – until board meeting Spring 2018)

Board Member

Dominique BECHT (3 years – until board meeting Spring 2018)

Board Member

Pamela PHUA (3 years – until board meeting Spring 2018)

Management Team of the Organisation

For management and daily operations, the following individuals are responsible:

BIANCHI Manuela Celestina Ms.	Fundraising & Human Resources
BRITTNER Thomas Mr.	Head Focus Group Higher Education
KHLOK Yem Mr.	Country Director Cambodia
PHAISANTHAM Charuwan Ms.	Head Focus Group Basic Education
REINHARDT-RIEDINGER Christin Ms.	Financial Controller & Donor Relations
KHIN CHO THEIN Ms.	Country Director Myanmar

Financial Statements 2017

Balance Sheet (in CHF)

	31.12.2017	31.12.2016
Assets		
Current assets		
Liquid assets	6,108,632	5,612,070
Financial assets	24,161	1,126
Receivables	1,497	0
Total Assets	6,134,290	5,613,196
Liabilities, Funds and Capital		
Current liabilities		
Accrued expenses	4,947	0
Funds and Capital		
Restricted funds	1,783,951	1,359,000
Capital of the Organisation	4,254,197	4,239,510
Surplus for the year	91,195	14,686
Total Liabilities, Funds and Capital	6,134,290	5,613,196

Statement of Operations (in CHF)

		1.1.2017 – 31.12.2017	1.1.2016 – 31.12.2016
Income			
Donation private individuals	573,116		557,350
<i>Restricted</i>	<u>1,656,080</u>	2,229,196	<u>1,676,647</u>
Donations corporate	1,284,550		1,087,880
<i>Restricted</i>	<u>4,048,081</u>	5,332,631	<u>3,372,450</u>
Other Income (donations via shop)		1,178	988
Total Income		7,563,005	6'695'315
Expenditure			
Project expenditure (see pages 12 to 16)		4,269,230	3,916,663
Administration & fundraising expenditure			
<i>Personnel costs</i>	123,445		110,760
<i>Administration, legal & travel</i>	8,242		2,128
<i>Other</i>	<u>-736</u>	130,951	<u>1,358</u>
Donation transfer to Child's Dream Foundation Thailand		2,649,238	2,570,098
Total Expenditure		7,049,419	6,601,007
Operating profit (loss)		513,586	94,308
Income (loss) from financial assets		2,560	-845
Result prior to allocation of restricted funds		516,146	93,463
Allocation to/from restricted funds		-424,951	-78,777
Profit		91,195	14,686

Attachment

Accounting Principles

The financial statements are prepared in accordance with the accounting recommendations KERN FER as well as SWISS GAAP FER 21 (stipulated for charitable and social non-profit organisations) and comply with the Swiss Code of Obligations as well as the provisions of the Articles of Association.

The financial statements give a true and fair view of the assets as well as the financial and earnings situation of Child's Dream Association, Zurich.

Accounting and Valuation Principles

Unless otherwise stated in the individual balance sheet items described, the balance sheet items are assessed at fair value on the date of the balance sheet. The accounts are kept in Swiss francs. Assets and liabilities in foreign currencies are calculated at the exchange rate on the date of the balance sheet.

Principles of Cash Flow Statement

The cash flow statement represents the change in the organisation's liquidity as a result of cash inflows and outflows from operating activities, investment activities and financial activities during the reporting period.

Statement of Changes in Capital (in CHF)

Cash and cash equivalents

	2017 CHF	2016 CHF
Cash balance	34,231	60,068
<i>Cash and cash equivalents are invested at the following banks:</i>		
Swiss banks	5,833,423	5,426,448
Thai and Laos banks	240,978	125,554
Total liquid funds	6,108,632	5,612,070

Securities

The net market values of the investment funds amounts to	24,161	1,126
--	--------	-------

Restricted funds

Restricted funds are earmarked for a determined purpose by a third party. Its use is therefore restricted.

Capital of the Organisation

Capital without restrictions by third parties, or with the purpose of being used by the organisation itself, are stated in the capital of the organisation.

Explanatory notes on the Statement of Operations

Income

For further details please refer to the comments in the performance report.

Donations

Total donations received increased by around CHF 867,000 or 13% compared to the previous year.

Direct project expenses

Direct project expenses increased by around CHF 352,000 or 9% compared to the previous year.

Administration expenses

The administration expenses are not assigned to projects. An allocation would be proportional to the project expenses.

Personnel expenses

Total amount of remuneration to members of the Management Board and the Executive Board. The personnel expenses of CHF 123,445 include social security, pension fund and health insurance contributions for the two Founders in a total of CHF 35,966.

Transactions with related, though legally independent organisations

In 2017, restricted donations of CHF 2,649,238 were transferred to the related Child's Dream Foundation, Thailand.

Additional information

Number of full-time jobs

The full-time equivalents on average for the year were neither more than ten staff units in 2017 nor in the previous year.

Donations in form of free items, free services and volunteering

In 2017 no free gifts were registered.

Cash Flow Statement 2017

	CHF
Profit of the year	91,195
Increase of restricted funds	424,952
Increase of financial assets	-23,035
Increase of receivables	-1,497
Increase of accrued expenses	4,947
Cash flow from operating activities	496,562
Cash flow from capital spending	0
Cash flow from financing activities	0
Change in liquid assets	496,562
Verification of change in liquid assets	
Liquid assets as of 1 January 2017	5,612,070
Liquid assets as of 31 December 2017	6,108,632
Increase in liquid assets	496,562

Statement of Changes in Capital (in CHF)

	Opening balance 1.1.2017	Allocation	Internal fund transfers	Closing balance 31.12.2017
Restricted capital	1,359,000	0	424,952	1,783,952
Capital of the organisation	4,254,196	91,195	0	4,345,391
Total	5,613,196	91,195	424,952	6,129,343

Performance Report 2017

The performance report was compiled in accordance with article 43, Swiss GAAP FER21:

Mandate of the organisation	see page 5
Board of the association and term	see page 6
Management team of the organisation	see page 6
Interdependence to associated organisations	see page 5 and 20

Breakdown of Project Expenses 2017 (in CHF)

Cambodia

Year 2017

Basic Education

All Provinces

School Stationery Programme	19,002
Solar Charging Stations	10,109
Various Expansions & Renovations	3,099
Playgrounds	29,467
Water systems	4,098
High School Scholarship Programme	271,702
School Health Programme	13,860
Dropout Prevention Programme	32,518
Empowering Youth – Dream Management Project	10,468

Battambang Province

O Khcheay Choeung Primary School	44,350
Phum Au Primary School	57,651
Ta Pon Primary School	46,630
Dambok Khposh Primary School	54,553
Chamka Tabun Primary School	46,393
Khvav Thom Primary School	57,148
Dun Som Secondary School	56,928
Phnom Prampy Primary School	44,962
Slor Kram Primary School	52,878
Prey Chas Secondary School Boarding Houses	4,595
Srok Aek Phnom Boarding House	47,436
Pich Chenda High School Career Planning Programme	20,711
Kampong Prahok Primary School	96,089

Oddar Meanchey Province

Ou Ampil Primary School	46,564
Dey Krahorm Primary School	59,868
O Romdeng Primary School	46,774
Chreung Khang Lech Primary School	44,299

Siem Reap Province

Pouk High School Career Planning Programme	31,600
Svay Leu High School Boarding House - Girls	42,968
Svay Leu High School Boarding House - Boys	42,968
Chub Rumdeng Secondary School	46,124

Pouk High School Computer Laboratory	36,040
Total Basic Education	1,421,852

Higher Education

Future Leader Center	50,861
Total Higher Education	50,861

Total Cambodia	1,472,713
-----------------------	------------------

Myanmar

Year 2017

Basic Education

All Provinces

High School Scholarship Programme 7,529

Kayah State

Le Woe Branched Middle School 39,343

Kayin State

Kawpan Lan Monastic Education Center 716

KSEAG Stationery Programme 338,810

Mi Prang Post Primary School 21,224

STTC Myanmar Running Costs 25,788

STTC Myawaddy Construction of a Campus 10,998

Hee Pho Dern Primary School 3,326

Saw Bwe Dern Middle School 4,189

Kyaw Nyunt Hta Primary School 2,895

Shan State

Kaw Dai Nation School 20,547

Naung Taung Computer Lab 14,391

Sa Ngaw High School Boarding House 49,270

Pan Lon Kha Post Primary School 26,834

Sagaing Division

Zin Nya Kan Baw Za Post Primary Monastic School 2,018

Shew Ya Daw Monastic Secondary School 1,070

Mandalay Division

Aung Za Yat Monastic School 3,082

Thaw Tu Za Na Computer Lab 5,692

RISE – Rural Indigenous Sustainable Education (Stationery Programme) 57,839

Magway Division

Say Ta Na Mon Monastic School 6,315

Da Ma Rakita Monastic Primary School 2,088

Total Basic Education 643,964

Higher Education

Myanmar & Myanmar Migrants

NEED Model Farm – Yangon Division, Myanmar 78,870

Minmahaw Higher Education Programme – Tak Province, Thailand 22,336

MKK Community Learning Centers – Mon & Kayin State, Myanmar 12,187

Mote Oo Curriculum Development – Yangon Division, Myanmar 181,132

Knowledge Zone Myanmar – Kayin State, Myanmar	15,613
Knowledge Zone Myanmar – Bago Division, Myanmar	21,864
MCAP Academies – Loikaw, Myitkyina, Hpa An, Taunggyi – Myanmar	270,599
TKMI Social & Political Interfaith Intensive Program – Yangon Division, Myanmar	76,974
Ethnic Development Learning Center – Chiang Rai Province, Thailand	55,031
KRCEE Karen Refugee Committee - Education Entity – Kayin State, Myanmar	51,797
Sehtheh Community Learning Center (Running Costs)– Mae Hong Son, Thailand	36,544
Sehtheh Community Learning Center (Construction) – Mae Hong Son, Thailand	43,940
CRED New Light Learning Center (Running Costs) – Shan State, Myanmar	12,678
CRED New Light Learning Center (Construction) – Shan State, Myanmar	40,326
Zwekabin Myay Hpa-an Education Project– Kayin State, Myanmar	32,552
DevelopEd Project Lashio – Shan State, Myanmar	37,303
Bop Htaw Education Empowerment Program – Mon State, Myanmar	48,727
Shan Intensive English Program – Yangon Division, Myanmar	28,862
Vocational Learning Center – Tanintharyi Division, Myanmar	15,241
RISE – Rural Indigenous Sustainable Education – Mandalay Division, Myanmar	4,653
Parami Institute – Yangon Division, Myanmar	133,119
Art, Language & Computer Center – Tanintharyi Division, Myanmar	6,360
Pre-College Program (PCP) – Mandalay Division, Myanmar	35,638
Wide Horizons Learning Center – Mon State, Myanmar	17,904
Total Higher Education	1,280,250

Health

BHI - School Health Education & Health Screening Programme – Mon State	28,647
Health Awareness Training for Lahu Community – Shan State	18,392
Drug and Alcohol Recovery & Education – Kayin State	107,121
Monastic School Health Programme – Bago Division	40,904
Tara - Health Screening & Health Education Programme – Mon State	15,823
Total Health	210,887

Total Myanmar	2,135,101
----------------------	------------------

Regional

Scholarship Programmes

University Scholarship Programme – Myanmar	490,027
University Scholarship Programme – Laos	122,260
University Scholarship Programme – Alumni	33,877
Social Entrepreneurship Grants	14,952

Total Scholarship Programmes	661,116
-------------------------------------	----------------

Others (Shop)	300
---------------	-----

Total Others	300
---------------------	------------

Total Regional	661,416
-----------------------	----------------

Breakdown by Country

Total Cambodia	1,472,713
Total Myanmar	2,135,101
Total Regional	661,416

Total Project Expenses 2017	4,269,230
------------------------------------	------------------

Breakdown by Focus Group

Total Basic Education	2,066,116
Total Higher Education	1,992,227
Total Health	210,887

Total Project Expenses 2017	4,269,230
------------------------------------	------------------

Impact Report 2017

Basic Education

Building schools: Our goal is to provide basic education for all children, thereby increasing the literacy rate and laying the foundations for a productive and self-determined life. This also reduces school drop-out rates, increases the rate of continuation from primary to secondary school, and encourages parents and communities to promote their children's school education.

Myanmar: We have built 14 schools with 51 classrooms for 3,487 students (1,761 girls / 1,726 boys) and 186 teachers (127 women / 59 men). We also built 34 toilets.

Cambodia: We have built 15 schools with 67 classrooms for 4,256 students (2,099 girls / 2,157 boys) and 118 teachers (67 women / 51 men). We also built 41 toilets.

Building boarding houses: Our goal is to provide shelter to children and young people from very remote places, as well as to increase the living and hygiene standards in the boarding houses. This way we enable children from remote areas to gain access to education and we improve learning environments that ensure the welfare and safety of children and adolescents.

Myanmar: We have built 2 boarding houses including dining rooms and kitchens for 116 students (80 girls / 36 boys). We also built 6 toilets.

Cambodia: We have built 7 boarding houses for 286 children (153 girls / 133 boys). We also built 18 toilets.

Building Computer Laboratories: It's our goal to provide children and youth from remote places with computer skills which enhance their chances for higher education and a better placement in the employment market. For this reason we supplied two schools in Myanmar and one High School in Cambodia with a fully equipped computer room benefitting 3,650 students (2,104 girls / 1,546 boys). This enables them to learn with a practical approach and it further improves their learning environments.

Stationary Programme - Myanmar and Cambodia: We support KSEAG (Karen State Education Assistance Group) in Myanmar to ensure that as many students as possible have access to stationary. In 2017, 175,075 children and 11,061 teachers in 1,450 schools benefited from this programme. In Cambodia too we run a project providing stationary for 2,460 students in 11 schools.

Various extensions, renovations and supporting activities: Existing buildings, and buildings previously erected by us occasionally need financial support to add extensions or perform needed renovation work.

Solar charging stations - Cambodia: we have built 2 solar charging stations for communities with a total of 168 families (806 people) in order to supplement the partly already existing - but often insufficient - power supply system with an alternative energy source.

Playgrounds - Cambodia: 10 playgrounds were built next to schools benefitting 1,744 students (833 girls / 911 boys). The teachers were instructed by us how to use them correctly.

Water systems - Cambodia: one water tanks was built to provide a school with water. 120 students (59 girls / 61 boys) benefit from this project.

High school programme - Cambodia: Academically strong students are financially supported so they can attend high school. In 2017, 245 students (165 girls, 80 boys) received a high school scholarship.

School Health Programme - Cambodia: Through this programme, we are increasing health and hygiene standards in schools by teaching students and teachers how to keep their school clean and healthy. In 6 schools, 1,463 students (724 girls, 739 boys) were taught about this topic.

Career planning programme - Cambodia: Various training courses are offered to help 900 students in their career planning and to increase their opportunities on the labor market.

Higher Education

Higher education in Myanmar: In our various programmes of higher education, Myanmar youth are trained, so that they may later promote the development of their country. Various educational institutions and vocational training centres are in charge of preparing students for the labor market, subjects are taught in classes, and additional knowledge gained through internships or other work experiences. A total of 6,244 (2,743 women, 3,501 men) are supported by these programmes. In addition we built 3 learning centres and 1 boarding house in support of those programmes.

Higher education for Burmese refugees and migrants in Thailand: Burmese refugees and migrants in Thailand are supported by special education programmes where they receive higher education or are prepared for a university degree. Overall, 264 trainees (132 women, 132 men) benefit from these projects.

Higher education in Cambodia: We support Puthi Komar organisation in its work to improve the quality of education in Cambodia. In 2017, 1,200 young people were able to benefit from this.

University Scholarship Programme: A total of 178 students from Myanmar (39 women, 42 men), Laos (29 women, 36 men) and Cambodia (20 women, 12 men) are enrolled at accredited universities in Thailand, Laos and Cambodia. We focus on fostering future leaders and specialists. This programme already has 203 alumni (Myanmar: 80 women, 71 men, Laos: 18 women, 34 men, Cambodia: none yet).

"Mote Oo": This programme aims at improving curricula. Workshops are held, teaching material is produced and the quality of the teaching is generally improved. Around 8,000 beneficiaries benefited from this programme in 2017.

TKMI - Programme for intercultural education: This training centre deals with mediation of religious conflicts and promotes peace through a social science education. The school is provided training to 30 students who in turn conducted classes with 2,500 young people in 2017.

NEED - Our model farm: A model farm was established years ago in Myanmar to grow organic products, whose product sales should cover the farm's running costs in the future. The farm annually attracts 35 students who are trained in agriculture.

Health

Health programmes in Myanmar: Various programmes aim at strengthening the awareness of health with teachers and students and to ensure that our high hygiene and health standards are met and maintained in schools. The number of beneficiaries of these health measures for children was 5,280 in 2017.

Drug and alcohol rehabilitation and training in Myanmar: Drug and Alcohol Recovery and Education (DARE) was founded in 2000 by a Canadian addiction recovery specialist and local ethnic leaders after witnessing the social destruction caused by orchestrated drug and alcohol dependence within ethnic minorities in Myanmar. DARE programme holds addiction education workshops, aims to give culturally appropriate treatment, and recruits addiction worker trainees and village coordinators in 30 villages in Hpa An District, Kayin State, Myanmar. We trained 13,406 people in 600 One-day-training sessions on drug and alcohol abuse and treated 76 patients at the treatment centre.

Responsibility for Project Work (by legal entity)

Child's Dream Association Switzerland is responsible for the realisation of projects in Myanmar and Cambodia, whereas Child's Dream Foundation Thailand invests in Thailand and Laos.

Further information can be obtained by downloading the following reports from our website:

- Financial Report 2017 of Child's Dream Foundation Thailand
- Consolidated Financials 2017 for both legal entities

Information for Donors

The following link gives you an overview of the different ways to financially support us.

<http://childsdream.org/donate/>

Donations are possible via bank transfers, credit cards, PayPal, cheques and Bitcoins.

If you are interested in making a bequest to us in your will, please get in touch with one of the two founders.

Switzerland

Swiss-taxed donors are able to deduct donations from their taxable income. Please get in touch with us if you require a tax receipt.

Donors outside Switzerland

We have set up our own legal entities or have entered into co-operation agreements with feeder organisations in the following countries:

- Australia
- France
- Germany
- Hong Kong
- Italy
- Luxembourg
- The Netherlands
- United Kingdom
- United States of America

Donors domiciled in the above-mentioned countries can claim tax relief on their donations to Child's Dream Association if they follow the donation path indicated under the respective country. More information can be found at <http://childsdream.org/donate/>

Contact Information

Please visit us!

We are happy to show you where and how we work. It would be a privilege to bring our very special world a bit closer to you.

Please get in touch with us prior to visiting our field offices in Yangon and Siem Reap since our project staff are on the road for the vast majority of their time.

Child's Dream Association
238/3 Wualai Road, Soi Boon Muang
T. Haiya, A. Muang
Chiang Mai 50100
Thailand

Tel: +66 (0)53 201 811

Fax: +66 (0)53 201 812

E-mail info@childsdream.org

Webpage www.childsdream.org

Facebook www.facebook.com/childsdreamfoundation

LinkedIn www.linkedin.com/company/child's-dream-foundation?trk=tabs_biz_home

Twitter twitter.com/Child_s_Dream

YouTube www.youtube.com/user/childsdreamtube

Legal Domicile

Child's Dream Association
c/o RA Philipp Kruse, Kruse Tax & Law
Feldeggstrasse 54
8008 Zurich
Switzerland

Please do not contact us at our legal domicile, but only at our address in Thailand.

Report of the Auditor



To the General Meeting of
Child's Dream Association
c/o RA Philipp Kruse
Kruse Tax & Law
Feldeggstrasse 54
8008 Zürich

Basle, February 9, 2018
SR/r

Report of the statutory auditors on the financial statements 2017

As statutory auditors, we have examined the financial statements as shown on pages 7 to 11 (balance sheet, statement of operations, Cash flow statement, statement of changes in capital and notes) of Child's Dream Association for the year ended December 31, 2017. In accordance with Swiss GAAP FER 21, the disclosures in the performance report (pages 12 to 16) are not subject to auditing by the auditors.

These financial statements are in accordance with Swiss GAAP FER, the statutory regulations and the deed of Association as well as the regulations is the responsibility of the Managing Committee. Our responsibility is to perform a limited statutory examination on these financial statements. We confirm that we meet the licensing and independence requirements as stipulated by Swiss law.

We conducted our examination in accordance with the Swiss Standard on the limited statutory examination. This standard requires that we plan and perform a limited statutory examination to identify material misstatements in the financial statements. A limited statutory examination consists primarily of inquiries of company personnel and analytical procedures as well as detailed tests of company documents as considered necessary in the circumstances. However, the testing of operational processes and the internal control system, as well as inquiries and further testing procedures to detect fraud or other legal violations, are not within the scope of this examination.

Based on our limited statutory examination, nothing has come to our attention that causes us to believe that the financial statements do not give a true and fair view of the financial position, the results of operations and the cash flows in accordance with Swiss GAAP FER and do not comply with the Swiss law, the deed of Association and the regulations.

INTER REGIO TREUHAND AG

Two handwritten signatures in blue ink are shown. The signature on the left is for Matthias Scherrer, and the signature on the right is for Max Müller.

Matthias Scherrer
Audit Expert
Certified Accountant
Auditor in Charge

Max Müller
Certified Fiduciary

Inter Regio Treuhand AG, Peter Merian-Strasse 54, Postfach, CH-4002 Basel
Telefon +41 61 205 77 33, Fax +41 61 205 77 39, info@irt.ch, www.irt.ch

Mitglied von EXPERTSuisse



Child's Dream Foundation

Audited Financial Report 2017

Table of Contents

Introduction	3
Reference to our Consolidated Financials 2017	5
Our Board	5
Financial Statements 2017	6
Balance Sheet (in THB)	6
Statement of Operations (in THB)	7
Notes	8
Breakdown of Project Expenses 2017 (in THB)	9
Information for Donors	12
Contact Information & Legal Domicile	13
Report of the Auditor	14

Introduction

The Year 2017: in many ways an extraordinary, but also challenging year for all of us at Child's Dream.

One would assume that, after having been in operation for more than 14 years, a certain consolidation would have set in and things become a bit more routine, hence boring. We also often hear the questions, 'What's next, Marc and Daniel? After 14 years of building up and running Child's Dream, monotony and boredom must be weighing you down'. Trust us, NOT AT ALL!!!

2017 was yet another outstandingly interesting and fulfilling year, but it was also one of the most demanding years when it comes to the workload on all of us. Thanks to our amazing team members, the heavy workload was mastered with ease and never before were so many projects implemented, programmes run and improved, and beneficiaries reached. All three of our focus groups progressed in their work, so we want to share a few highlights of our working year, addressing beneficiaries in Myanmar, Cambodia, Laos and Thailand.

In September, our "Health" group had reason to celebrate. The Children's Medical Fund Programme accepted its 1,500th child for treatment. Close to five million US Dollars were spent, since inception in 2006, on this life-saving programme. Without the incredible dedication of our health team, many of these little children would have perished.

Our "Basic Education" team made big leaps forward in 2017. What started with building schools and boarding houses back in 2004, resulted in tens of thousands of children having access to education for the first time. But then, it's not just about providing access; it's increasingly about the quality of education and the relevance of what is taught. Our increased focus on quality and relevance will further strengthen the educational systems of our target countries.

Creating responsible leaders and specialists is the main focus of our "Higher Education" group. Change makers will be able to sustainably and positively shape the future of their respective countries. We are happy to see that our past success in Myanmar is more and more filtering through in the other three countries. In 2017, the first ever Alumni Conference was held in Laos, a sign of a maturing scholarship programme.

On a more macro level, we finalised our strategy for the coming five years and revised our vision and mission statement to be more precise.

Vision: Empowered people responsibly shaping their communities

Mission: Improving health and education for sustainable development

And as a Child's Dreamer, we certainly always hope that some of our own dreams become true. Having worked in Myanmar and with Burmese beneficiaries for over 14 years, one such wish became reality in 2017. Child's Dream Myanmar Association, registered in Yangon, was born in the summer. Not in our wildest dreams, some years ago operating under the radar of an oppressive regime, did we think that our own charity registration in Myanmar would ever become a reality.

On the sad side, we are certainly disturbed and distressed by the recent events in Rakhine State, Myanmar. We truly hope for the future of the country that this humanitarian crisis can be solved quickly without inflicting any further damage on people.

Though we have said this again and again, our tremendous impact on tens of thousands of children and youth would not have been possible without the very generous support of all our donors and friends. Having such a loyal, engaged and caring donor base means the world to us. Many, many thanks!

And finally a big thank you to the most amazing team on earth. We are proud of each and every team member in the Child's Dream family and thank you all for your tremendous dedication to helping children and youth in need. You are our heroes!

Alone we can do so little; together we can do so much!!!



Marc Thomas Jenni
Founder & President



Daniel Marco Siegfried
Founder & Vice-President

Reference to our Consolidated Financials 2017

Child's Dream, as a charitable organisation, consists of Child's Dream Foundation Thailand and Child's Dream Association Switzerland. In order to give you an overview of our work, the consolidated financials are available on our website.

This Audited Financial Report 2017 only reports on the work of Child's Dream Foundation Thailand, and is, therefore, not comprehensive. However, it is a legal requirement to publish this audited financial statement. The audit report can be found on page 14.

Our Board

President & Founder – Head Operations

Marc Thomas JENNI, Swiss (4 years – until March 2021)

Vice-President & Founder – Head Projects

Daniel Marco SIEGFRIED, Swiss (4 years – until March 2021)

Vice-President

Pimpimon THONGTIAN, Thai (4 years – until March 2021)

Treasurer – Head Focus Group Basic Education

Charuwan PHAISANTHAM, Thai (4 years – until March 2021)

Financial Statements 2017

Balance Sheet (in THB)

	31.12.2017	31.12.2016
Assets		
Current assets		
Liquid assets	17,458,618	23,375,569
Financial assets	12,675	12,675
Non-current assets		
Fixed assets	21,824,862	21,995,862
Total Assets	39,296,155	45,384,106
Liabilities, Funds and Capital		
Current liabilities		
Liabilities	10,554,510	8,051,596
Funds and Capital		
Paid-in capital	300,000	300,000
Restricted funds	2,711,495	3,243,837
Capital of the organisation	33,788,672	30,766,143
Surplus/Loss for the year	-8,058,522	3,022,530
Total Liabilities, Funds and Capital	39,296,155	45,384,106

Statement of Operations (in THB)

		1.1.2017 – 31.12.2017	1.1.2016 – 31.12.2016
Income			
Donation private individuals	293,041		114,930
<i>Restricted</i>	<u>0</u>	293,041	<u>100,000</u> 214,930
Donations corporate	1,668,152		1,025,652
<i>Restricted</i>	<u>6,749,377</u>	8,417,529	<u>10,189,124</u> 11,214,776
Donation transfer from Child's Dream Association Switzerland		90,057,017	90,834,368
Total Income		98,767,587	102,264,074
Expenditure			
Project expenditure (see pages 9 to 11)		96,544,328	87,240,128
Administration & fundraising expenditure			
<i>Personnel costs</i>	7,256,637		6,438,357
<i>Utilities</i>	418,783		458,512
<i>Vehicles & Transportation</i>	201,943		35,220
<i>Administration, Communication & IT</i>	742,721		1,243,394
<i>Travelling & Fundraising</i>	225,840		274,508
<i>Other costs</i>	31,676		-123,499
<i>Depreciation</i>	342,000		342,000
<i>Provisions</i>	1,600,000	10,819,600	1,800,000 10,468,492
Total Expenditure		107,363,928	97,708,620
Operating profit/loss		-8,596,341	4,555,454
Income/loss from financial result		5,477	30,568
Result prior to allocation from restricted funds		-8,590,864	4,586,022
Allocation to/from restricted funds		532,342	-1,563,492
Profit/Loss for the year		-8,058,522	3,022,530

Notes

- 1) The financial statements are prepared in accordance with the accounting recommendations KERN FER as well as SWISS GAAP FER 21, (stipulated for charitable and social non-profit organisations) but audited according to Thai audit standards.
- 2) Income and expenditure are recorded on a cash basis.
- 3) Administration expenditures are not allocated to projects. An allocation would be calculated proportionally to the project costs (according to Swiss GAAP FER21, Rz. 26).
- 4) The consolidated administration expenditure of Child's Dream Foundation (Thailand) and Child's Dream Association (Switzerland) was 5.7%.
- 5) No statement of change in capital was compiled.
- 6) A funds flow statement has not been compiled (according to Swiss GAAP FER21, Rz. 27).
- 7) There are currently no liabilities concerning projects; otherwise, this would be disclosed in the following 'breakdown on project expenses'.

Breakdown of Project Expenses 2017 (in THB)

Laos	Year 2017
Basic Education	
Laos – all Provinces	
Water Systems	1,230,194
High School Scholarship Programme	3,511,958
Vocational Scholarship Programme	2,582,145
School Stationery Programme	40,747
Various Supporting Activities	118,027
Various Expansions & Renovations	43,392
Computer Laboratories	5,055,775
Teacher Capacity Building	442,660
Savannakhet Province	
Baan Phin Lower Secondary School – Utumporn	124,272
Dong Khan Koo Lower Secondary School - Champhone	160,534
Na Lai Secondary School – Atsapangthong	121,428
Non Hung Primary School – Atsapangthong	305,708
Lao Yai Primary School – Uthumporn	845,003
Dong Na Kham Secondary School - Atsapangthong	1,636,815
Champasak Province	
Na Cheauk Primary School – Khong	86,477
Nong Pha Nuan Lower Secondary School - Paksong	1,459,550
Pha Nuan Dong Lower Secondary School – Pak Xong	543,967
Xaiyabouli – Province	
Had Ngam Lower Secondary School – Kob	77,678
Pa Lai Secondary – Paklay	69,190
Pang Hai Secondary School - Kob	51,483
Samakkeexai Lower Secondary School - Ngern	914,202
Pang Bong Lower Secondary School - Ngern	1,475,939
Don Tan Secondary School Boarding Houses – Kob	2,209,821
Luang Prabang – Province	
Nam Duan Lower Secondary School – Nam Bak	108,750
Hua Na Lower Secondary School – Nam Bak	207,120
Na Ngiw Boarding Houses – Chom Phet	3,530,574
Vieng Kham Boarding Houses – Vieng Kham	3,530,574
Sam Soum Boarding Houses – Vieng Kham	3,059,831
Sob Jea Lower secondary School – Phonsai	2,003,702
Phon Sai Secondary School – Phonsai	3,404,835
Mok Kha Lower Secondary School Boarding Houses – Vieng Kham	497,119
Total Basic Education	39,449,470

Total Laos	39,449,470
-------------------	-------------------

Thailand

Basic Education

all Provinces

High School Scholarship Programme	3,964,255
Vocational Scholarship Programme	1,856,151
Various Supporting Activities	149,469
Volunteer Spirit Organisation - Life Skills Training	649,433
Water Systems	101,755

Mae Hong Son Province

Ya Prage Salawin Learning Center – Running Costs	103,969
Teacher as Coach & Project Based Learning	488,242

Tak Province

CDC School Complex, Maintenance – Mae Sot	739,560
Pyo Khinn Migrant Learning Center, Running Costs – Mae Sot	619,894
BHSOH Primary and Secondary Migrant School, Running Costs – Mae Sot	2,170,105

Chiang Rai Province

Half Day School Programme, Running Costs – Mae Sai	848,519
--	---------

Kanchanaburi Province

Children of the Forest Foundation, Running Costs - Nonglo	1,411,081
---	-----------

Chiang Mai Province

Shan Youth Power – Migrant Rights Training	173,704
Mother tongue based Bilingual Education Programme – whole province	3,208,829

Total Basic Education	16,484,966
------------------------------	-------------------

Higher Education

Chiang Mai Province

BEAM Education Foundation – Chinag Mai	3,162,133
--	-----------

Mae Hong Son Province

KnCC Karenni Community Learning Centre, Refugee Camp 1	923,515
--	---------

Tak Province

Youth Connect Vocational Training Center – Mae Sot	3,565,741
Knowledge Zone Vocational Training Center – Mae Sot	818,605
KRCEE Karen Refugee Committee - Education Entity – Mae Sot	9,427,482
MHEP Minmahaw Higher Educatuion Programme – Mae Sot	1,878,679

Total Higher Education	19,776,155
-------------------------------	-------------------

Total Thailand	36,261,121
-----------------------	-------------------

Regional

Health

Children's Medical Fund – Myanmar Patients	20,347,458
Children's Medical Fund – Laos Patients	486,279
Total Health	20,833,737

Total Regional	20,833,737
-----------------------	-------------------

Total Laos	39,449,470
Total Thailand	36,261,121
Total Regional	20,833,737
Total Project Expenses 2017	96,544,328

Total Basic Education	55,934,436
Total Higher Education	19,776,155
Total Health	20,833,737
Total Project Expenses 2017	96,544,328

Information for Donors

Please **only** use our Thai legal entity for donations in Thai Baht (THB). If you wish to donate to our organisation in other currencies or by credit card, PayPal, cheque or Bitcoins, visit the donation page on our website under:

<http://childsdream.org/donate/>

Bank Transfers

Bank transfers can be made to the following account:

Bank: **Siam Commercial Bank**
Rajabhat Branch
Chiang Mai 50300
Thailand
Account Holder: Child's Dream Foundation
Account Number: 821-222061-4 (THB)

Please inform us by email or phone about your donation to our Thai bank account since we might not see the name of the depositor.

By Cheque

Please only make Thai Baht cheques payable to 'Child's Dream Foundation' and send them to our address in Thailand as stated below under 'Contact Information & Legal Domicile'.

For cheques in all other currencies, please make them payable to 'Child's Dream Association' and send them to our office in Chiang Mai.

If you are interested in making a bequest to us in your will, please get in touch with one of the two founders.

If you would like further information on how to make a donation or a grant, please don't hesitate to contact us.

Contact Information & Legal Domicile

Please contact and visit us! We will be happy to show you where and how we work. It would be a pleasure for us to bring our very special world a bit closer to you.

Child's Dream Foundation
238/3 Wualai Road, Soi Boon Muang
T. Haiya, A. Muang
Chiang Mai, 50100
Thailand

Tel: +66 (0)53 201 811
Fax: +66 (0)53 201 812
E-mail: info@childsdream.org
Website: www.childsdream.org

Facebook: www.facebook.com/childsdreamfoundation
LinkedIn: www.linkedin.com/company/child's-dream-foundation?trk=tabs_biz_home
Twitter: www.twitter.com/Child_s_Dream
YouTube: www.youtube.com/user/childsdreamtube

Report of the Auditor



บริษัท สำนักงานสอบบัญชีประจักษ์ จำกัด
PRAWIN AUDIT CO.,LTD.

INDEPENDENT AUDITOR'S REPORT

The committee of **Child's Dream Foundation**

Report on the Audit of the Financial Statements

Opinion

We have audited the financial statements of **Child's Dream Foundation** (the Foundation), which comprise the statement of financial position as at December 31, 2017, and the statement of income for the year then ended, and notes to the financial statements, including a summary of significant accounting policies.

In our opinion, the accompanying financial statements present fairly, in all material respects, the financial position of the Foundation as at December 31, 2017, and its financial performance for the year then ended in accordance with Thai Financial Reporting Standards for Non-Publicly Accountable Entities.

Basis for Opinion

We conducted our audit in accordance with Thai Standards on Auditing. Our responsibilities under those standards are further described in the *Auditor's Responsibilities for the Audit of the Financial Statements* section of our report. We are independent of the Foundation in accordance with the Federation of Accounting Professions under the Royal Patronage of his Majesty the King's Code of Ethics for Professional Accountants together with the ethical requirements that are relevant to our audit of the financial statements, and we have fulfilled our other ethical responsibilities in accordance with these requirements. We believe that the audit evidence we have obtained is sufficient and appropriate to provide a basis for our opinion.

Responsibilities of Management for the Financial Statements

Management is responsible for the preparation and fair presentation of the financial statements in accordance with Thai Financial Reporting Standards for Non-Publicly Accountable Entities and for such internal control as management determines is necessary to enable the preparation of financial statements that are free from material misstatement, whether due to fraud or error.

In preparing the financial statements, management is responsible for assessing the Foundation's ability to continue as a going concern, disclosing, as applicable, matters related to going concern and using the going concern basis of accounting unless management either intends to liquidate the Foundation or to cease operations, or has no realistic alternative but to do so.

Auditor's Responsibilities for the Audit of the Financial Statements

Our objectives are to obtain reasonable assurance about whether the financial statements as a whole are free from material misstatement, whether due to fraud or error, and to issue an auditor's report that includes our opinion. Reasonable assurance is a high level of assurance, but is not a guarantee that an audit conducted in accordance with Thai Standards on Auditing will always detect a material misstatement when it exists. Misstatements can arise from fraud or error and are considered material if, individually or in the aggregate, they could reasonably be expected to influence the economic decisions of users taken on the basis of these financial statements.

As part of an audit in accordance with Standards on Auditing, we exercise professional judgment and maintain professional skepticism throughout the audit. We also:

- Identify and assess the risks of material misstatement of the financial statements, whether due to fraud or error; design and perform audit procedures responsive to those risks, and obtain audit evidence that is sufficient and appropriate to provide a basis for our opinion. The risk of not detecting a material misstatement resulting from fraud is higher than for one resulting from error, as fraud may involve collusion, forgery, intentional omissions, misrepresentations, or the override of internal control.
- Obtain an understanding of internal control relevant to the audit in order to design audit procedures that are appropriate in the circumstances, but not for the purpose of expressing an opinion on the effectiveness of the Company's internal control.
- Evaluate the appropriateness of accounting policies used and the reasonableness of accounting estimates and related disclosures made by management.
- Conclude on the appropriateness of management's use of the going concern basis of accounting and, based on the audit evidence obtained, whether a material uncertainty exists related to events or conditions that may cast significant doubt on the Company's ability to continue as a going concern. If we conclude that a material uncertainty exists, we are required to draw attention in our auditor's report to the related disclosures in the financial statements or, if such disclosures are inadequate, to modify our opinion. Our conclusions are based on the audit evidence obtained up to the date of our auditor's report. However, future events or conditions may cause the Company to cease to continue as a going concern.
- Evaluate the overall presentation, structure and content of the financial statements, including the disclosures, and whether the financial statements represent the underlying transactions and events in a manner that achieves fair presentation.

We communicate with management regarding, among other matters, the planned scope and timing of the audit and significant audit findings, including any significant deficiencies in internal control that we identify during our audit.

Sukanda Pray-in

(Miss Sukanda Pray-in)

Certified Public Accountant (Thailand)

Registration number 9114

Chiang Mai

February 5, 2018