



Child's Dream

Dedicated to empowering children, youth and communities in the Mekong Sub-Region

Consolidated Financial Report 2016

Table of Contents

Introduction	3
Consolidated Financials 2016	5
Balance Sheet (in CHF)	5
Notes	5
Statement of Operations (in CHF)	6
Notes	6
Financial Statistics	7
Information for Donors	9
Contact Information	10

Introduction

As the founders of Child's Dream, it is our great privilege to address our dear friends, valued donors and various stakeholders each year in our annual report. Throughout the year we often get praised for the positive impact of Child's Dream, but we also take constructive criticism to heart.

Overwhelmingly, we receive confirmation that the decision we took 14 years ago was the right one. Setting up Child's Dream has profoundly changed our lives forever and all this in an amazingly positive way. But then, this is not our achievement alone. The reward belongs to our entire team.

'Alone we can do so little. Together we can do so much.'

For the two of us, this year's annual report seems to be the perfect opportunity to stand back from the limelight and to put our 39 Child's Dream heroes at centre stage. There are no external floodlights needed to make our extraordinary team shine, since this overwhelming energy all comes from within.

Where to start? You might not be aware that our health team, taking care of hundreds of very sick little children, is on standby 24/7, sleeping in our safe-house. They do this, not just on normal nights, but also during weekends or times when others celebrate public holidays. It is not just an amazing commitment towards our work, but also a mental challenge to deal with emotional parents worrying about their children in a country foreign to them.

Then there are the project heroes in our education teams who are in charge of building our schools or taking care of higher education programmes all over the region. Yes, it's beautiful to visit South East Asia and experience the amazing mix of cultures and food. However, getting to the very remote corners of our work requires driving for a combined total of more than 150,000 kilometers a year! This is driving 3.5 times around the globe and in second-hand pick-up trucks. One has to bear in mind that, for almost half the year, we experience extreme weather conditions and many of the roads turn into mud slicks. It happens that, now and then, cars get stuck, forcing our project heroes to spend the night in the middle of nowhere. We will not elaborate on food and toilet issues, but one can imagine that such situations are rather out of the ordinary for most of us, right?

Or picture visiting a remote programme location in Karen State of Myanmar, walking along a little footpath in the middle of a mosquito-infested jungle with armed soldiers both in front and behind you. There are no roads accessible to motorised vehicles. If there is public transport available in other areas, our teams spend nights on local buses, or what passes for buses, trying to reach projects by the next morning. Yes we could fly, but unfortunately, where we operate, airports are not much in supply.

To facilitate all this, a strong logistical backbone is ready to support our work out of our three offices in Chiang Mai, Siem Reap and Yangon.

By now you will appreciate that it is not we who deserve the credit. The credit goes to our many Child's Dream heroes who make the organisation go round and round, every single day of the year. You will also understand why we call our colleagues 'heroes'. Our heroes have families, partners, friends, children, parents, dogs and cats to care for at home, but still always keep their motivation and dedication high. This not only makes us eternally grateful, but also extremely proud. Our team of heroes truly goes the extra mile, day after day, improving the lives of tens of thousands of children and youth. Our heroes definitely deserve all the credit.

And since only 'together we can achieve so much', a special thank you definitely also goes to all our donors, friends and families, who believe in us and give us the energy to keep going. What we have achieved together would not have been possible without all of you, so a million thanks from the bottom of our hearts!



Daniel Marco Siegfried
Founder & Head Projects



Marc Thomas Jenni
Founder & Head Operations

Consolidated Financials 2016

Below, please find the consolidated financial figures of Child's Dream Foundation Thailand and Child's Dream Association Switzerland.

Comprehensive audited annual reports of both legal entities can be found on our webpage www.childsdream.org.

Balance Sheet (in CHF)

	31.12.2016	31.12.2015
Assets		
Liquid assets	6,273,466	5,981,386
Financial assets	1,485	1,486
Fixed assets	622,358	623,454
Total Assets	6,897,309	6,606,326
Liabilities, Funds and Capital		
Liabilities	227,815	150,763
Restricted funds	1,450,782	1,328,244
Paid-in capital	8,488	8,573
Unrestricted capital	5,110,018	5,365,364
Surplus for the year	100,206	-246,618
Total Liabilities, Funds and Capital	6,897,309	6,606,326

Notes

- 1) For consolidation purposes, a foreign exchange rate of 35.3427586 between CHF and THB was applied in 2016. For 2015 a FX rate of 34.99190731 was the basis for calculation.
- 2) The yearly FX rate is the weighted average resulting from 'Donation Transfers' between Child's Dream Association Switzerland and the receiving entity Child's Dream Foundation Thailand.

Statement of Operations (in CHF)

		1.1.2016 - 31.12.2016		1.1.2015 - 31.12.2015
Income				
Donations private individuals	560,602		470,055	
<i>Restricted</i>	<u>1,679,476</u>	2,240,078	<u>2,040,181</u>	2,510,236
Donations corporate	1,116,900		687,725	
<i>Restricted</i>	<u>3,660,745</u>	4,777,645	<u>2,845,834</u>	3,533,559
Donations shop		987		18,786
Interest		2,047		2,190
Total Income		7,020,757		6,064,771
Expenditure				
Project expenditure		6,385,065		5,927,033
Administration & fundraising expenditure				
<i>Personnel costs</i>	292,928		276,943	
<i>Administration, legal & travel</i>	59,046		36,554	
<i>Financial costs</i>	2,026		731	
<i>Depreciation</i>	9,677		4,287	
<i>Provisions</i>	50,930		38,876	
<i>Other costs</i>	<u>-2,136</u>	412,471	<u>1,642</u>	359,033
Total Expenditure		6,797,536		6,286,066
Allocation to restricted funds		123,015		25,323
Surplus for the year		100,206		-246,618
Total		7,020,757		6,064,771

Notes

- 1) Our consolidated administration expense ratio for 2016 is 5.9%.
- 2) Third party fundraising providers and our Hong Kong legal entity hold approximately CHF 2,160,000 on behalf of Child's Dream. This amount is not yet included in this consolidation. Funds will be transferred to our account as and when required and shown in the respective consolidation accordingly.
- 3) In 2016, 12 volunteers provided unpaid work for our organisations. The volunteers stayed with us for different periods of time and contributed approximately 4.8 man-years.
- 4) As of end of 2016, we counted 39 paid employees (beside the volunteers above). Fifteen were from Thailand, eleven from Myanmar, five from Cambodia, three from Switzerland, two from Laos and one from each of Germany, the Philippines and the USA.

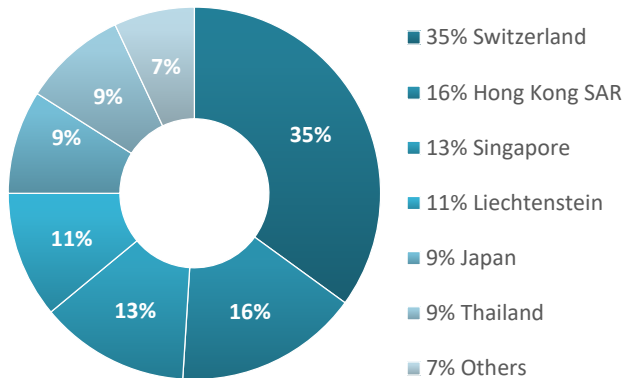
Financial Statistics

Source and uses of funds

2016

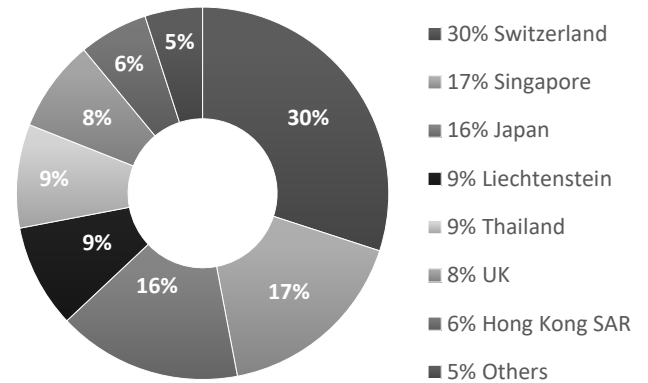
Origin of donations

Total CHF 7,020,757



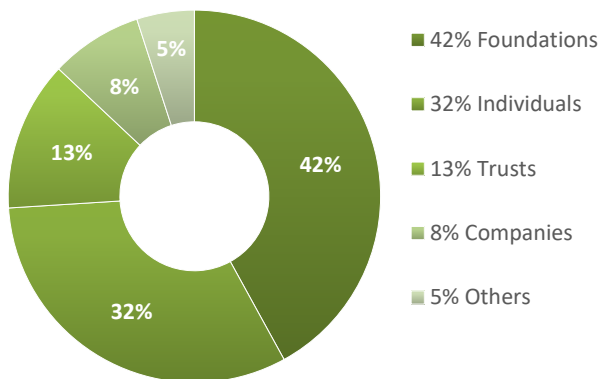
2015

Total CHF 6,064,771

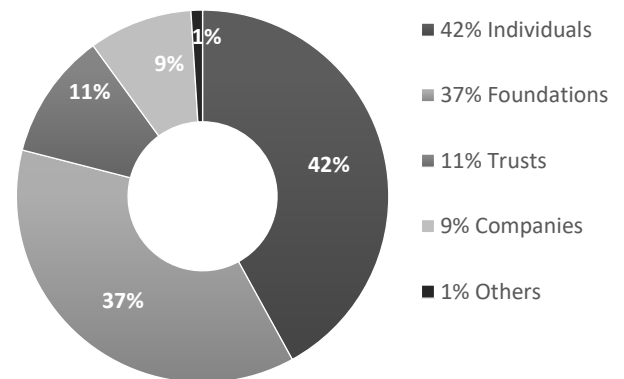


Type of donors

Total CHF 7,020,757

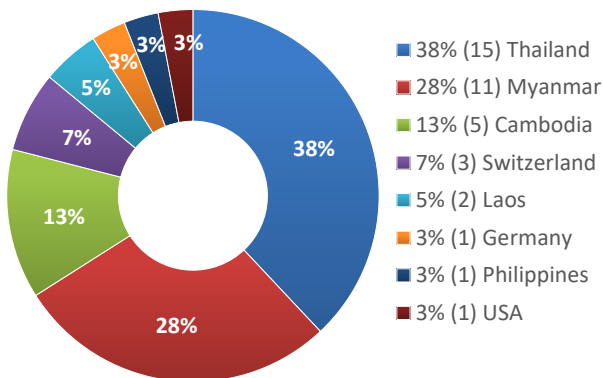


Total CHF 6,064,771

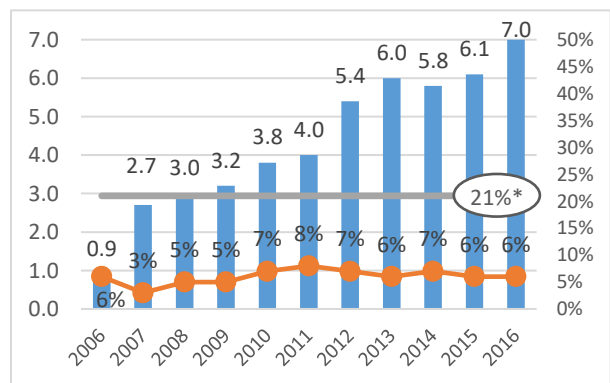


Employees by nationality

End of 2016, we counted 39 paid employees



Donation volume (m USD) vs. admin. costs (%)

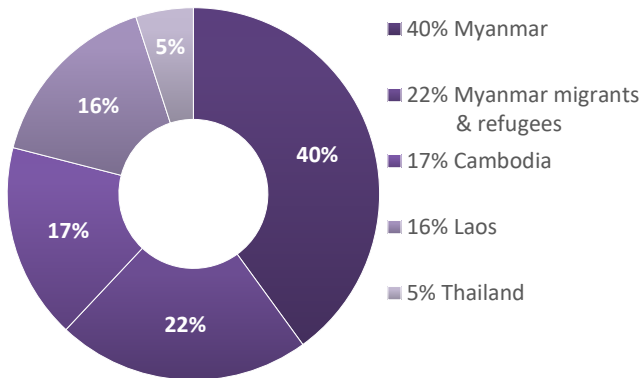


* Average admin cost of ZEW0-approved (Swiss) NGOs (SOURCE Annual Report ZEW0 2014)

2016

Project expenditures by origin / nationality of beneficiaries

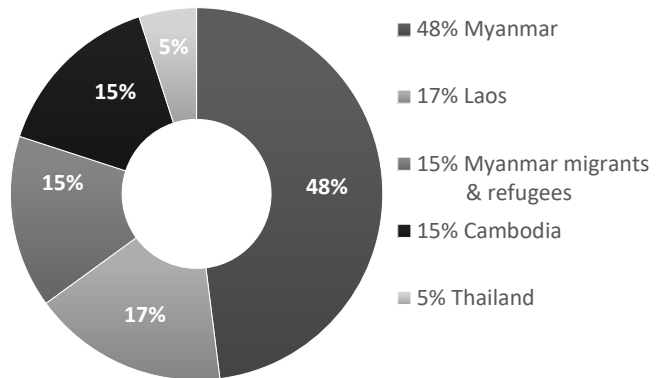
Total CHF 6,385,065



2015

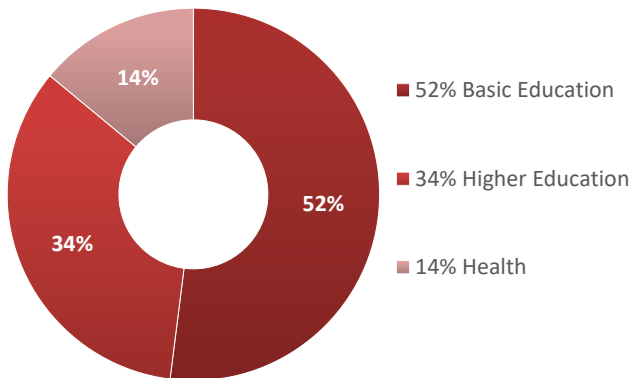
Project expenditures by origin / nationality of beneficiaries

Total CHF 5,927,033

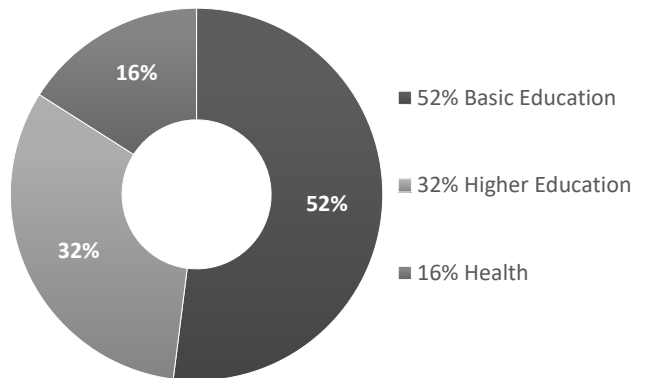


Project expenses by focus groups

Total CHF 6,385,065

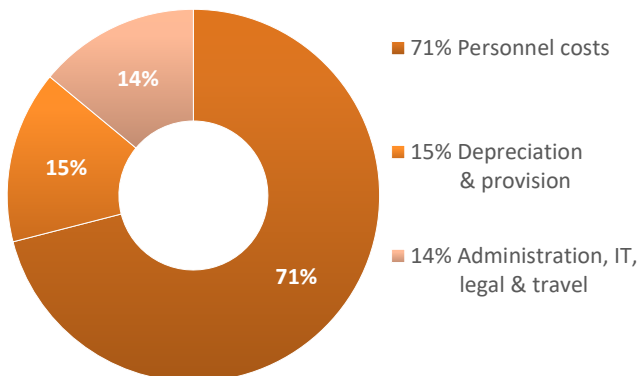


Total CHF 5,927,033

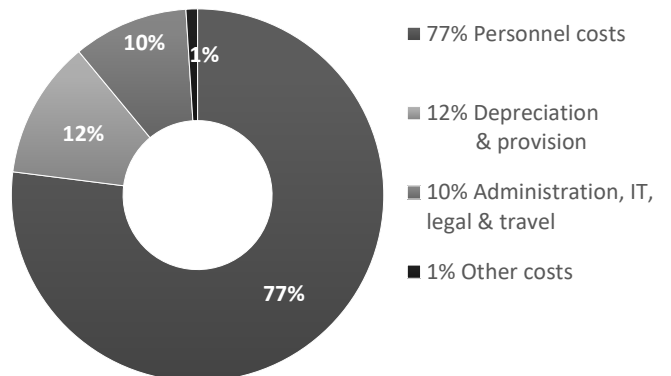


Administration costs

Total CHF 412,471



Total CHF 359,033



Information for Donors

The following link gives you an overview of the different ways to financially support us.

<http://childsdream.org/donate/>

Donations are possible via bank transfer, credit cards, PayPal, cheques and bitcoins.

If you are interested in making a bequest to us in your will, please get in touch with one of the two founders.

Donors from Switzerland

Swiss-taxed donors can deduct donations from their taxable income. Please get in touch with us if you require a tax receipt.

Donors outside of Switzerland

We have set up legal entities or have entered into co-operation agreements with feeder organisations in the following countries:

- Australia
- France
- Germany
- Hong Kong
- Italy
- Luxemburg
- The Netherlands
- United Kingdom
- United States of America

Donors domiciled in the above-mentioned countries can claim tax relief on their donations to Child's Dream if they follow the donation path indicated under the respective country. More information can be found at <http://childsdream.org/donate/>

Contact Information

Thailand

Main Office

Child's Dream Foundation
238/3 Wualai Road
Soi Boon Muang
T. Haiya, A. Muang
Chiang Mai 50100
Thailand

phone +66 (0)53 201 811

GPS [18° 46.320'N, 98° 58.752'E](#)

[Map to our office >](#)

Cambodia

Field Office

Child's Dream Cambodia
N. 160, Group 10
Krous Village
Svay Dangcum Commune
Siem Reap
Cambodia

phone +855 63 64 85 888

GPS [13°22'22.3"N 103°50'09.0"E](#)

[Map to our office >](#)

Myanmar

Field Office

CDMS Myanmar Company Limited
No. 256-266, Room 5D
Seik Kan Thar Street (Upper Block)
Kyauktada Township
Yangon
Myanmar

phone +95 (0)1 398 077 / 245 643

GPS [16°46'40.2"N 96°09'47.9"E](#)

[Map to our office >](#)

Since our colleagues in Cambodia and Myanmar are mostly on the road, we kindly ask you to give us advance notice if you intend to visit one of our field offices. Please write to info@childsdream.org and we are happy to arrange for a meeting.

E-mail info@childsdream.org

Webpage www.childsdream.org

Facebook www.facebook.com/childsdreamfoundation

LinkedIn www.linkedin.com/company/child's-dream-foundation?trk=tabs_biz_home

Twitter twitter.com/Child_s_Dream

YouTube www.youtube.com/user/childsdreamtube